

See Page 50

See Page 52

**PROJECT RELATED DATA**

- 2A Primary and Alternate Route
- 3B Primary Route
- 8C Alternate Route
- C21 Companion Route
- R17 Retired Route

Route Segment ID  
Route Segment Node

**PROJECT SUBSTATIONS**

- Proposed Substation Fence
- Construction Workspace
- Laydown Yard

**ATC**

The information presented in this map document is advisory and is intended for reference purposes only. Applicant owned and operated facility locations are approximate. Data Sources: ATC, XCEL, WDNR, WDOT, PSCW, County LIOs, NRCS, Imagery WROC 2020.

**WETLAND DELINEATION METHOD**

- Field Identified
- Desktop Determined

**WATERWAYS**

- Delineated Waterway
- Stream A → Waterway ID

- Off ROW Construction Access
- Construction Matting in Wetland
- Construction Matting Pad in Wetland\*
- \*Matting Area Not to Scale
- Mapped WDNR Waterway
- Temporary Clear Span Bridge
- Temporary Clear Span Bridge with in-stream support
- Existing Bridge / Culvert
- Preliminary Structure Locations\*

\* Preliminary Structures are APPROXIMATE and are subject to change. Final pole placement will not be determined until detailed engineering is complete for the ordered route.

- Perennial Stream
- Intermittent Stream
- Open Water
- County Boundary

0 150 300 Feet

North Arrow

**APPENDIX A FIGURE 4A-2 ENVIRONMENTAL FEATURE AND ACCESS PLAN**

*Tremval - Arpin Primary*

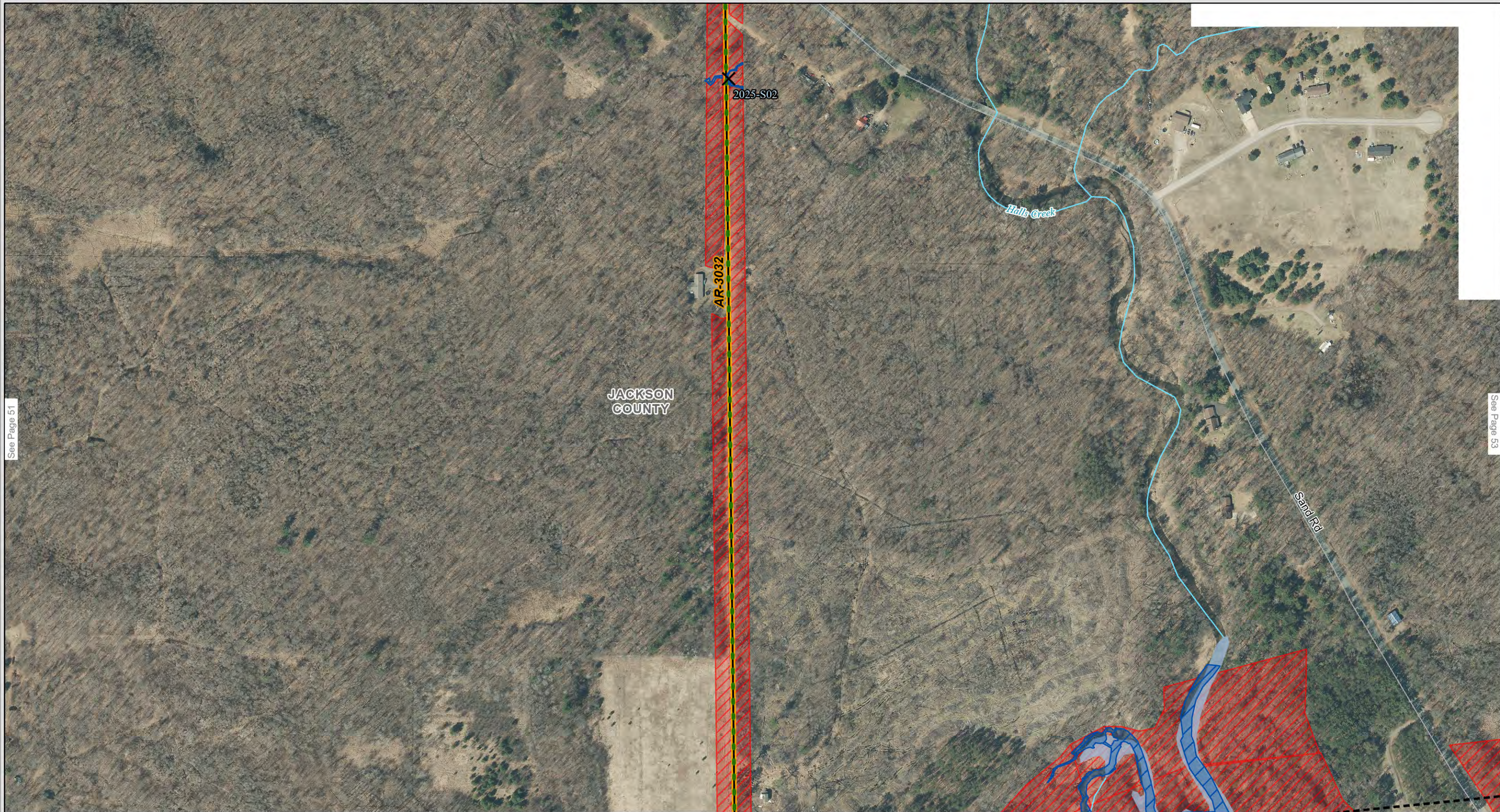
**GRID FORWARD - CENTRAL WISCONSIN PROJECT**

FEBRUARY 2025    MAP A4B2-51    PAGE 51 OF 210

APPENDIX A FIGURE 4A-2 - ENVIRONMENTAL FEATURE AND ACCESS PLAN

See Page 51

See Page 53



**PROJECT SUBSTATIONS**

- Proposed Substation Fence
- Construction Workspace
- Laydown Yard

**ATC**

The information presented in this map document is advisory and is intended for reference purposes only. Applicant owned and operated facility locations are approximate. Data Sources: ATC, XCEL, WDNR, WDOT, PSCW, County LIOs, NRCS, Imagery WROC 2020.

**PROJECT RELATED DATA**

- 2A Primary and Alternate Route
- 3B Primary Route
- 8C Alternate Route
- C21 Companion Route
- R17 Retired Route

Route Segment ID  
Route Segment Node

**WETLAND DELINEATION METHOD**

- Field Identified
- Desktop Determined

**WATERWAYS**

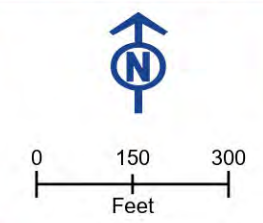
- Delineated Waterway
- Stream A → Waterway ID

- Off ROW Construction Access
- Construction Matting in Wetland
- Construction Matting Pad in Wetland\*
- \*Matting Area Not to Scale
- Mapped WDNR Waterway

- Temporary Clear Span Bridge
- Temporary Clear Span Bridge with in-stream support
- Existing Bridge / Culvert
- Preliminary Structure Locations\*

\* Preliminary Structures are APPROXIMATE and are subject to change. Final pole placement will not be determined until detailed engineering is complete for the ordered route.

- Perennial Stream
- Intermittent Stream
- Open Water
- County Boundary



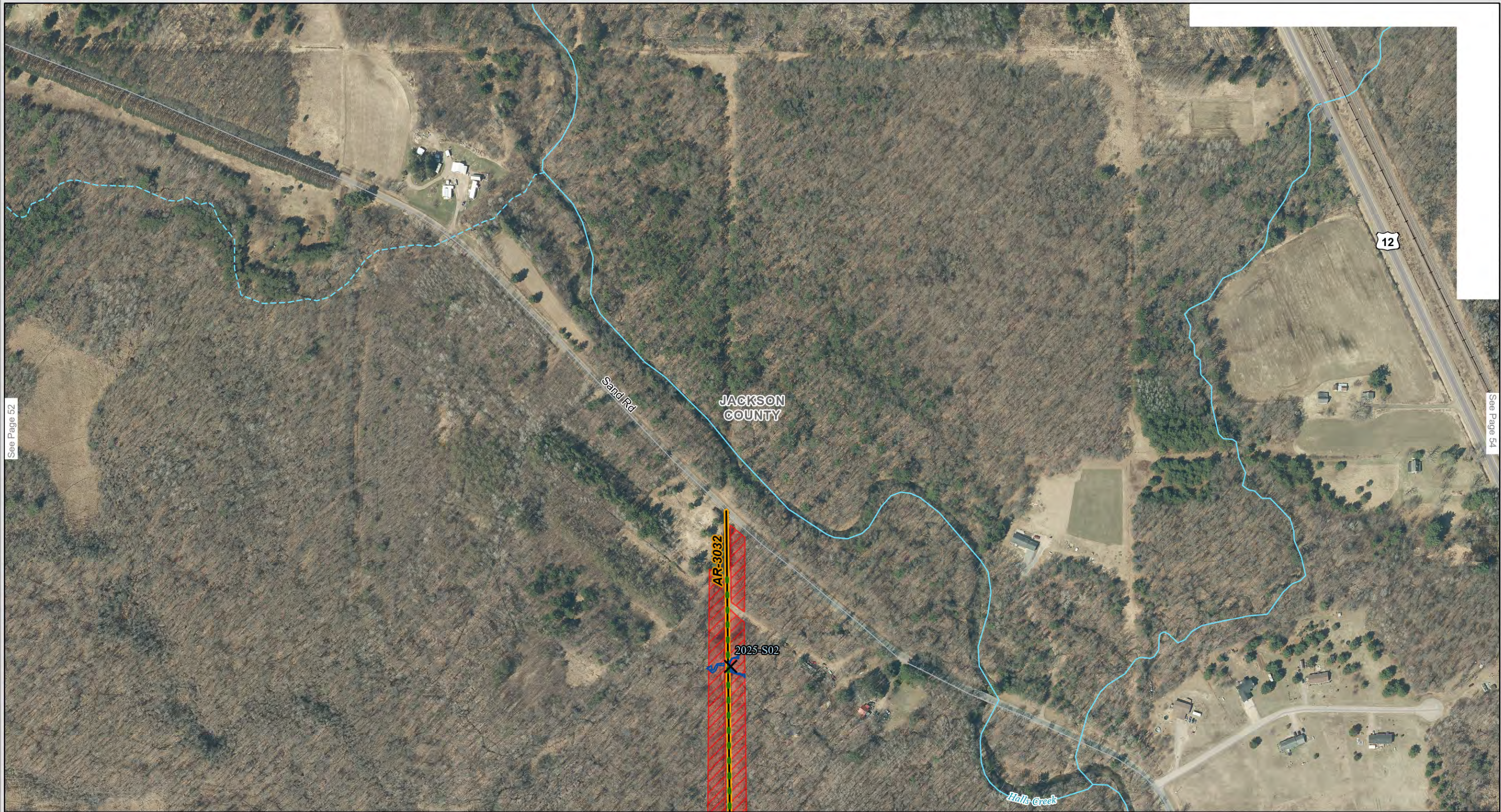
**APPENDIX A FIGURE 4A-2 ENVIRONMENTAL FEATURE AND ACCESS PLAN**

*Tremval - Arpin Primary*

**GRID FORWARD - CENTRAL WISCONSIN PROJECT**

FEBRUARY 2025	MAP A4B2-52	PAGE 52 OF 210
---------------	-------------	----------------

APPENDIX A FIGURE 4A-2 - ENVIRONMENTAL FEATURE AND ACCESS PLAN



See Page 52

See Page 54

**PROJECT RELATED DATA**

- 2A Primary and Alternate Route
- 3B Primary Route
- 8C Alternate Route
- C21 Companion Route
- R17 Retired Route

Route Segment ID  
Route Segment Node

**PROJECT SUBSTATIONS**

- Proposed Substation Fence
- Construction Workspace
- Laydown Yard

**ATC**

The information presented in this map document is advisory and is intended for reference purposes only. Applicant owned and operated facility locations are approximate. Data Sources: ATC, XCEL, WDNR, WDOT, PSCW, County LIOs, NRCS, Imagery WROC 2020.

**WETLAND DELINEATION METHOD**

- Field Identified
- Desktop Determined

**WATERWAYS**

- Delineated Waterway
- Stream A → Waterway ID

Off ROW Construction Access

Construction Matting in Wetland

Construction Matting Pad in Wetland\*

\*Matting Area Not to Scale

Mapped WDNR Waterway

- Temporary Clear Span Bridge
- Temporary Clear Span Bridge with in-stream support
- Existing Bridge / Culvert
- Preliminary Structure Locations\*

\* Preliminary Structures are APPROXIMATE and are subject to change. Final pole placement will not be determined until detailed engineering is complete for the ordered route.

**PERENNIAL STREAM**

**INTERMITTENT STREAM**

**OPEN WATER**

County Boundary

0 150 300 Feet

North Arrow

**APPENDIX A FIGURE 4A-2 ENVIRONMENTAL FEATURE AND ACCESS PLAN**

*Tremval - Arpin Primary*

**GRID FORWARD - CENTRAL WISCONSIN PROJECT**

FEBRUARY 2025      MAP A4B2-53      PAGE 53 OF 210

APPENDIX A FIGURE 4A-2 - ENVIRONMENTAL FEATURE AND ACCESS PLAN



See Page 53

See Page 55

**ATC**

The information presented in this map document is advisory and is intended for reference purposes only. Applicant owned and operated facility locations are approximate. Data Sources: ATC, XCEL, WDNR, WDOT, PSCW, County LIOs, NRCS, Imagery WROC 2020.

**PROJECT SUBSTATIONS**

- Proposed Substation Fence
- Construction Workspace
- Laydown Yard

**PROJECT RELATED DATA**

- 2A Primary and Alternate Route
- 3B Primary Route
- 8C Alternate Route
- C21 Companion Route
- R17 Retired Route
- Route Segment ID
- Route Segment Node

**WETLAND DELINEATION METHOD**

- Field Identified
- Desktop Determined

**WATERWAYS**

- Delineated Waterway
- Stream A → Waterway ID

**Other Features:**

- Off ROW Construction Access
- Construction Matting in Wetland
- Construction Matting Pad in Wetland\*
- \*Matting Area Not to Scale
- Mapped WDNR Waterway

- Temporary Clear Span Bridge
- Temporary Clear Span Bridge with in-stream support
- Existing Bridge / Culvert
- Preliminary Structure Locations\*

**Water Features:**

- Perennial Stream
- Intermittent Stream
- Open Water

**County Boundary**

0 150 300 Feet

\* Preliminary Structures are APPROXIMATE and are subject to change. Final pole placement will not be determined until detailed engineering is complete for the ordered route.

**APPENDIX A FIGURE 4A-2 ENVIRONMENTAL FEATURE AND ACCESS PLAN**

*Tremval - Arpin Primary*

**GRID FORWARD - CENTRAL WISCONSIN PROJECT**

FEBRUARY 2025      MAP A4B2-54      PAGE 54 OF 210

APPENDIX A FIGURE 4A-2 - ENVIRONMENTAL FEATURE AND ACCESS PLAN



See Page 54

See Page 56

The information presented in this map document is advisory and is intended for reference purposes only. Applicant owned and operated facility locations are approximate. Data Sources: ATC, XCEL, WDNR, WDOT, PSCW, County LIOs, NRCS, Imagery WROC 2020.

**PROJECT RELATED DATA**

- 2A Primary and Alternate Route
- 3B Primary Route
- 8C Alternate Route
- C21 Companion Route
- R17 Retired Route

Route Segment ID  
Route Segment Node

**WETLAND DELINEATION METHOD**

- Field Identified
- Desktop Determined

**WATERWAYS**

- Delineated Waterway
- Stream A → Waterway ID

- Off ROW Construction Access
- Construction Matting in Wetland
- Construction Matting Pad in Wetland\*
- \*Matting Area Not to Scale
- Mapped WDNR Waterway

- Temporary Clear Span Bridge
- Temporary Clear Span Bridge with in-stream support
- Existing Bridge / Culvert
- Preliminary Structure Locations\*

\* Preliminary Structures are APPROXIMATE and are subject to change. Final pole placement will not be determined until detailed engineering is complete for the ordered route.

- Perennial Stream
- Intermittent Stream
- Open Water
- County Boundary

**APPENDIX A FIGURE 4A-2**  
**ENVIRONMENTAL FEATURE AND ACCESS PLAN**  
*Tremval - Arpin Primary*  
**GRID FORWARD - CENTRAL WISCONSIN PROJECT**

FEBRUARY 2025	MAP A4B2-55	PAGE 55 OF 210
APPENDIX A FIGURE 4A-2 - ENVIRONMENTAL FEATURE AND ACCESS PLAN		

See Page 55

See Page 57



**PROJECT RELATED DATA**

**PROJECT SUBSTATIONS**

- Proposed Substation Fence
- Construction Workspace
- Laydown Yard

**ATC**

The information presented in this map document is advisory and is intended for reference purposes only. Applicant owned and operated facility locations are approximate. Data Sources: ATC, XCEL, WDNR, WDOT, PSCW, County LIDs, NRCS, Imagery WROC 2020.

**PROJECT RELATED DATA**

- 2A Primary and Alternate Route
- 3B Primary Route
- 8C Alternate Route
- C21 Companion Route
- R17 Retired Route

Route Segment ID  
Route Segment Node

**WETLAND DELINEATION METHOD**

- Field Identified
- Desktop Determined

**WATERWAYS**

- Delineated Waterway
- Stream A → Waterway ID

- Off ROW Construction Access
- Construction Matting in Wetland
- Construction Matting Pad in Wetland\*
- \*Matting Area Not to Scale
- Mapped WDNR Waterway

- Temporary Clear Span Bridge
- Temporary Clear Span Bridge with in-stream support
- Existing Bridge / Culvert
- Preliminary Structure Locations\*

\* Preliminary Structures are APPROXIMATE and are subject to change. Final pole placement will not be determined until detailed engineering is complete for the ordered route.

- Perennial Stream
- Intermittent Stream
- Open Water
- County Boundary

0 150 300 Feet

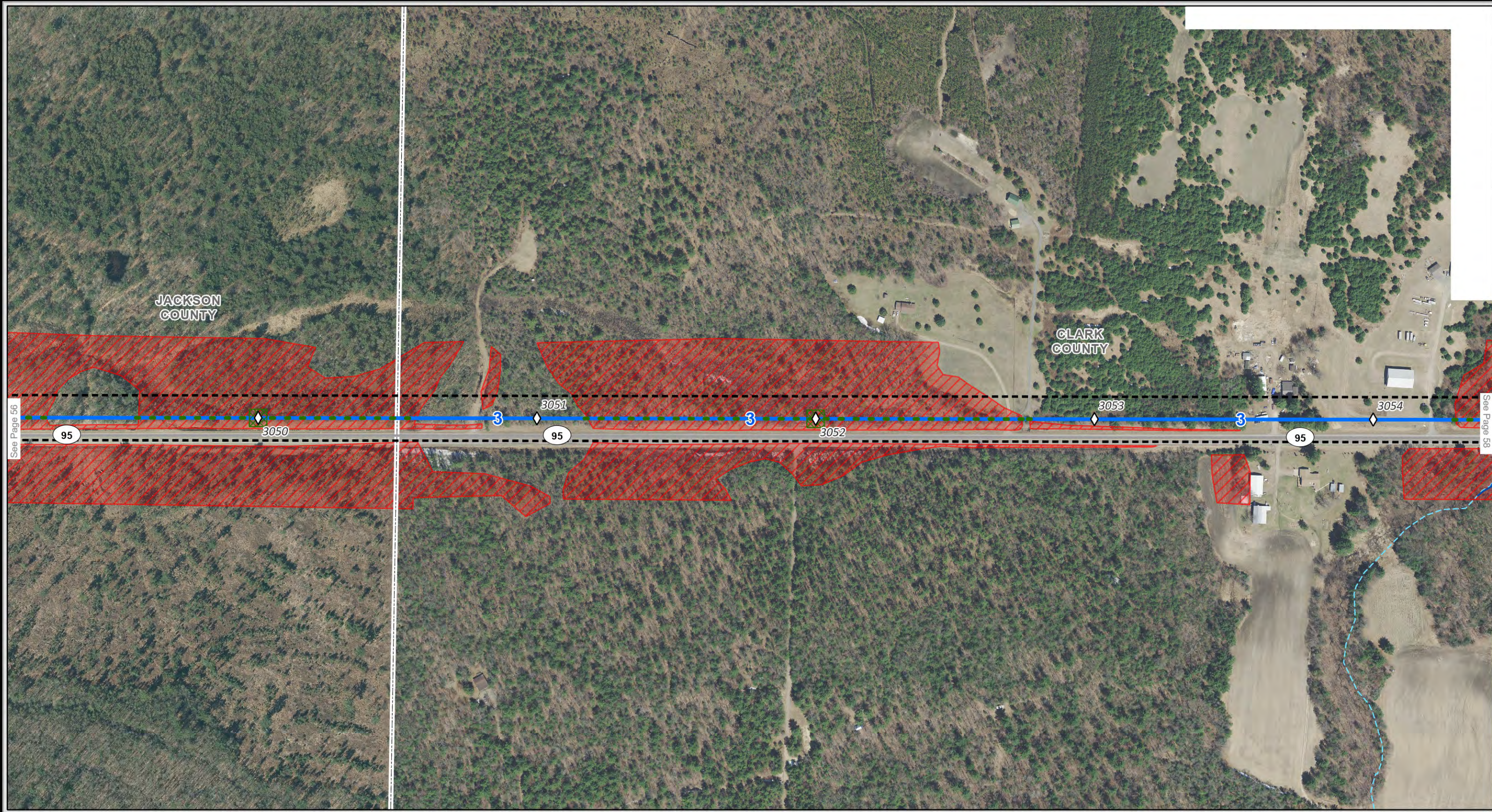
**APPENDIX A FIGURE 4A-2 ENVIRONMENTAL FEATURE AND ACCESS PLAN**

*Tremval - Arpin Primary*

**GRID FORWARD - CENTRAL WISCONSIN PROJECT**

FEBRUARY 2025    MAP A4B2-56    PAGE 56 OF 210

APPENDIX A FIGURE 4A-2 - ENVIRONMENTAL FEATURE AND ACCESS PLAN



See Page 56

See Page 58

**PROJECT RELATED DATA**

**PROJECT SUBSTATIONS**

- Proposed Substation Fence
- Construction Workspace
- Laydown Yard

**ATC**

The information presented in this map document is advisory and is intended for reference purposes only. Applicant owned and operated facility locations are approximate. Data Sources: ATC, XCEL, WDNR, WDOT, PSCW, County LIOs, NRCS, Imagery WROC 2020.

**PROJECT RELATED DATA**

- 2A Primary and Alternate Route
- 3B Primary Route
- 8C Alternate Route
- C21 Companion Route
- R17 Retired Route

Route Segment ID  
Route Segment Node

**WETLAND DELINEATION METHOD**

- Field Identified
- Desktop Determined

**WATERWAYS**

- Delineated Waterway
- Stream A → Waterway ID

- Off ROW Construction Access
- Construction Matting in Wetland
- Construction Matting Pad in Wetland\*
- \*Matting Area Not to Scale
- Mapped WDNR Waterway

- Temporary Clear Span Bridge
- Temporary Clear Span Bridge with in-stream support
- Existing Bridge / Culvert
- Preliminary Structure Locations\*

\* Preliminary Structures are APPROXIMATE and are subject to change. Final pole placement will not be determined until detailed engineering is complete for the ordered route.

- Perennial Stream
- Intermittent Stream
- Open Water
- County Boundary

0 150 300 Feet

North Arrow

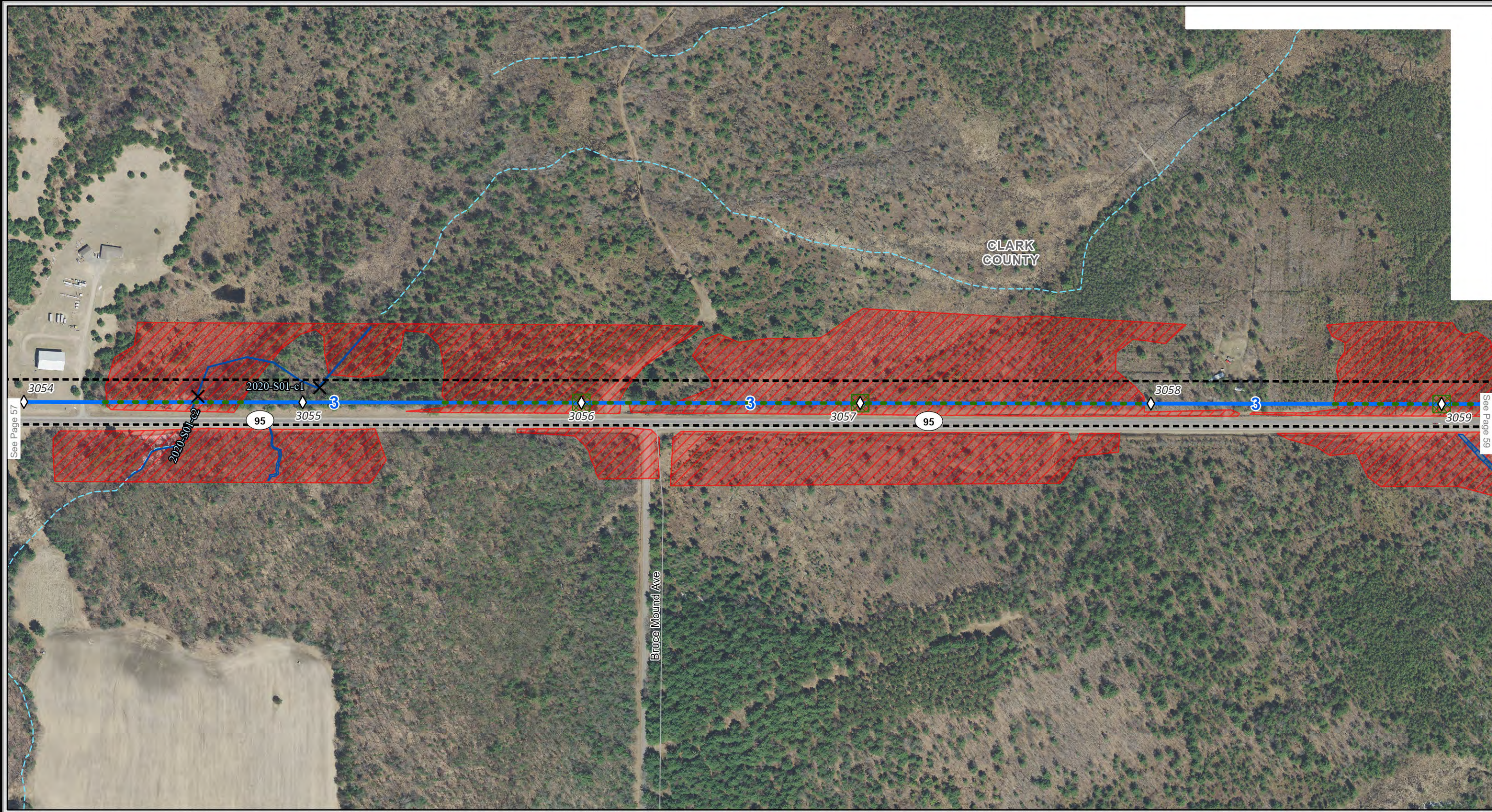
**APPENDIX A FIGURE 4A-2 ENVIRONMENTAL FEATURE AND ACCESS PLAN**

*Tremval - Arpin Primary*

**GRID FORWARD - CENTRAL WISCONSIN PROJECT**

FEBRUARY 2025    MAP A4B2-57    PAGE 57 OF 210

APPENDIX A FIGURE 4A-2 - ENVIRONMENTAL FEATURE AND ACCESS PLAN



**PROJECT SUBSTATIONS**

- Proposed Substation Fence
- Construction Workspace
- Laydown Yard

The information presented in this map document is advisory and is intended for reference purposes only. Applicant owned and operated facility locations are approximate. Data Sources: ATC, XCEL, WDNR, WDOT, PSCW, County LIOs, NRCS, Imagery WROC 2020.

**PROJECT RELATED DATA**

- 2A Primary and Alternate Route
- 3B Primary Route
- 8C Alternate Route
- C21 Companion Route
- R17 Retired Route

Route Segment ID  
Route Segment Node

**WETLAND DELINEATION METHOD**

- Field Identified
- Desktop Determined

**WATERWAYS**

- Delineated Waterway
- Stream A → Waterway ID

- Off ROW Construction Access
- Construction Matting in Wetland
- Construction Matting Pad in Wetland\*
- \*Matting Area Not to Scale
- Mapped WDNR Waterway

- Temporary Clear Span Bridge
- Temporary Clear Span Bridge with in-stream support
- Existing Bridge / Culvert
- Preliminary Structure Locations\*

- Perennial Stream
- Intermittent Stream
- Open Water
- County Boundary

0 150 300 Feet

\* Preliminary Structures are APPROXIMATE and are subject to change. Final pole placement will not be determined until detailed engineering is complete for the ordered route.

**APPENDIX A FIGURE 4A-2 ENVIRONMENTAL FEATURE AND ACCESS PLAN**

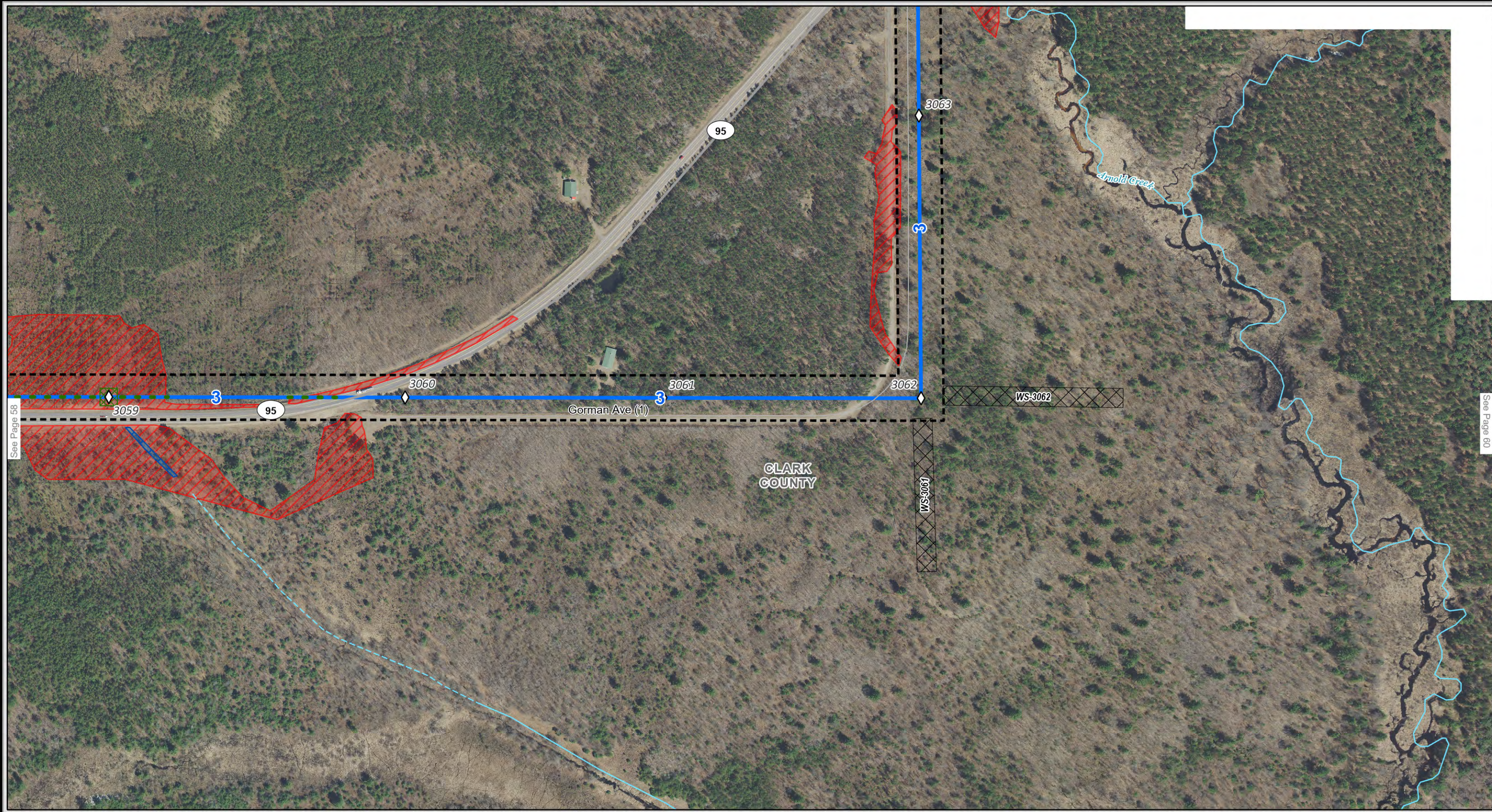
*Tremval - Arpin Primary*

**GRID FORWARD - CENTRAL WISCONSIN PROJECT**

FEBRUARY 2025    MAP A4B2-58    PAGE 58 OF 210

APPENDIX A FIGURE 4A-2 - ENVIRONMENTAL FEATURE AND ACCESS PLAN





See Page 58

See Page 60

**PROJECT RELATED DATA**

- 2A Primary and Alternate Route
- 3B Primary Route
- 8C Alternate Route
- C21 Companion Route
- R17 Retired Route

Route Segment ID  
Route Segment Node

**PROJECT SUBSTATIONS**

- Proposed Substation Fence
- Construction Workspace
- Laydown Yard

**ATC**

The information presented in this map document is advisory and is intended for reference purposes only. Applicant owned and operated facility locations are approximate. Data Sources: ATC, XCEL, WDNR, WDOT, PSCW, County LIOs, NRCS, Imagery WROC 2020.

**WETLAND DELINEATION METHOD**

- Field Identified
- Desktop Determined

**WATERWAYS**

- Delineated Waterway
- Stream A → Waterway ID
- Mapped WDNR Waterway

- Off ROW Construction Access
- Construction Matting in Wetland
- Construction Matting Pad in Wetland\*
- \*Matting Area Not to Scale

- Temporary Clear Span Bridge
- Temporary Clear Span Bridge with in-stream support
- Existing Bridge / Culvert
- Preliminary Structure Locations\*

\* Preliminary Structures are APPROXIMATE and are subject to change. Final pole placement will not be determined until detailed engineering is complete for the ordered route.

- Perennial Stream
- Intermittent Stream
- Open Water
- County Boundary

0 150 300 Feet

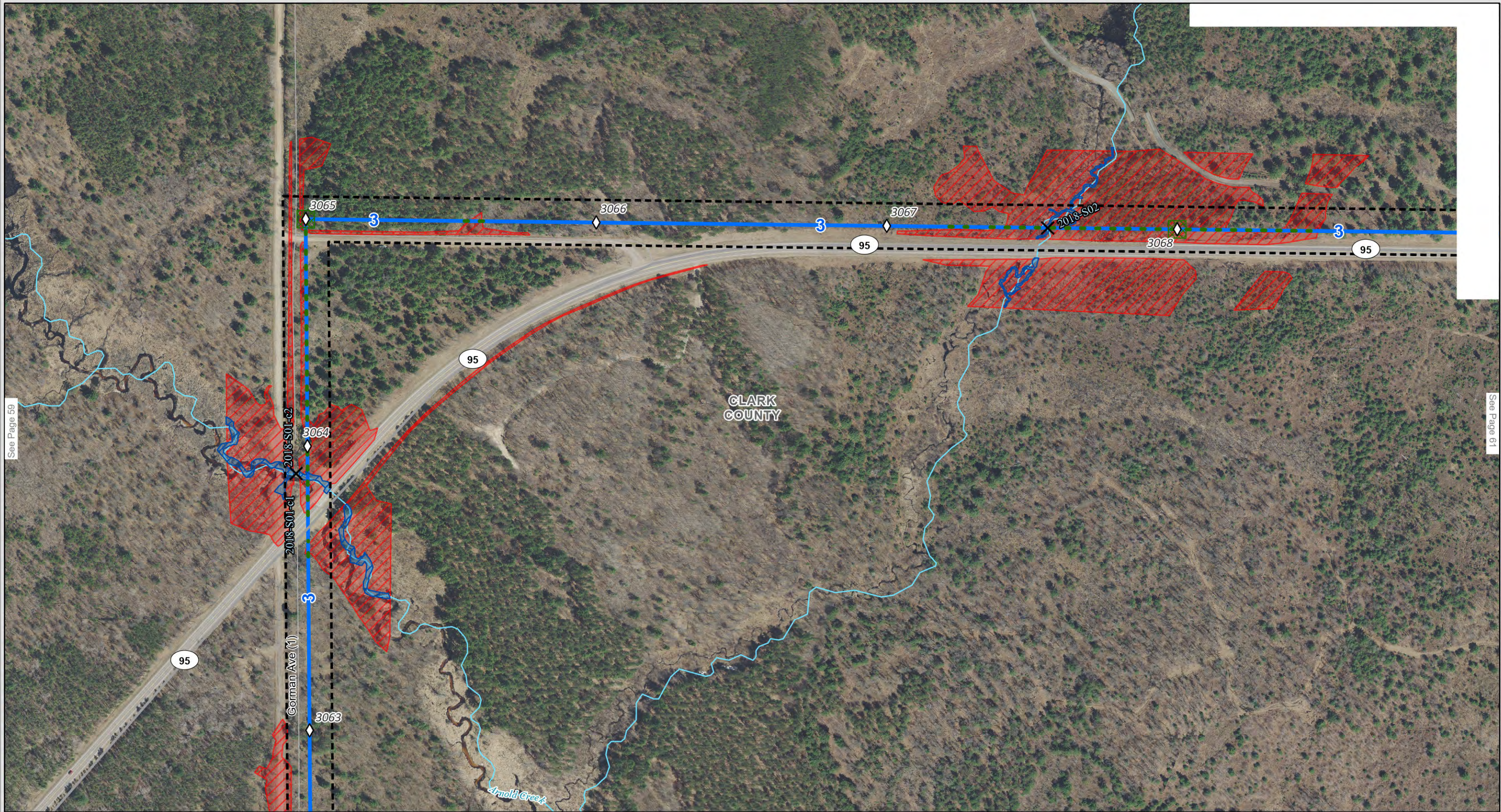
North Arrow

**APPENDIX A FIGURE 4A-2 ENVIRONMENTAL FEATURE AND ACCESS PLAN Tremval - Arpin Primary**

**GRID FORWARD - CENTRAL WISCONSIN PROJECT**

FEBRUARY 2025    MAP A4B2-59    PAGE 59 OF 210

APPENDIX A FIGURE 4A-2 - ENVIRONMENTAL FEATURE AND ACCESS PLAN



See Page 59

See Page 61

**PROJECT RELATED DATA**

**PROJECT SUBSTATIONS**

- Proposed Substation Fence
- Construction Workspace
- Laydown Yard

**ATC**

The information presented in this map document is advisory and is intended for reference purposes only. Applicant owned and operated facility locations are approximate. Data Sources: ATC, XCEL, WDNR, WDOT, PSCW, County LIOs, NRCS, Imagery WROC 2020.

**PROJECT RELATED DATA**

- 2A Primary and Alternate Route
- 3B Primary Route
- 8C Alternate Route
- C21 Companion Route
- R17 Retired Route

Route Segment ID  
Route Segment Node

**WETLAND DELINEATION METHOD**

- Field Identified
- Desktop Determined

**WATERWAYS**

- Delineated Waterway
- Stream A → Waterway ID

- Off ROW Construction Access
- Construction Matting in Wetland
- Construction Matting Pad in Wetland\*
- \*Matting Area Not to Scale
- Mapped WDNR Waterway

- Temporary Clear Span Bridge
- Temporary Clear Span Bridge with in-stream support
- Existing Bridge / Culvert
- Preliminary Structure Locations\*

\* Preliminary Structures are APPROXIMATE and are subject to change. Final pole placement will not be determined until detailed engineering is complete for the ordered route.

- Perennial Stream
- Intermittent Stream
- Open Water
- County Boundary

0 150 300 Feet

North Arrow

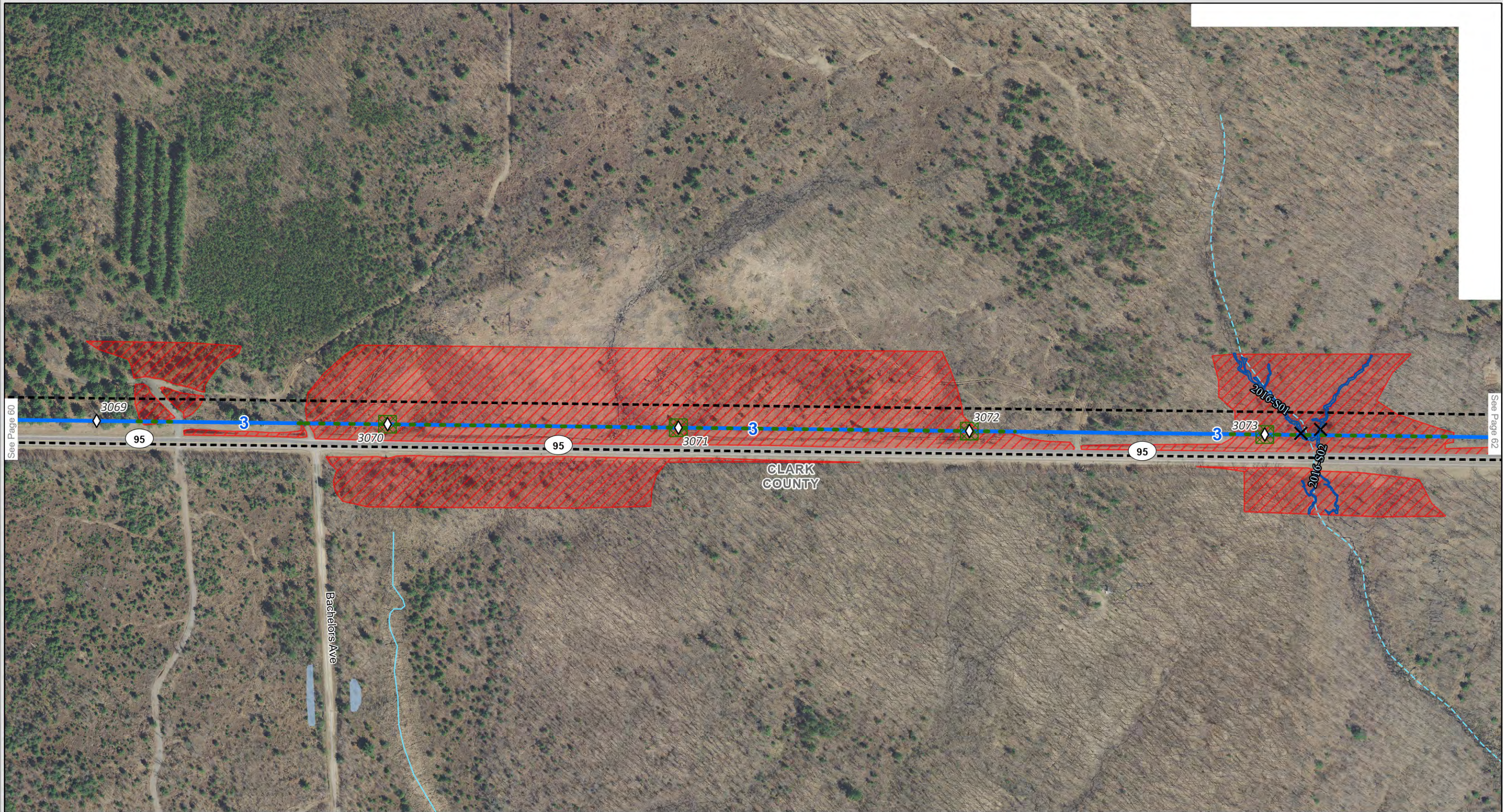
**APPENDIX A FIGURE 4A-2 ENVIRONMENTAL FEATURE AND ACCESS PLAN**

*Tremval - Arpin Primary*

**GRID FORWARD - CENTRAL WISCONSIN PROJECT**

FEBRUARY 2025    MAP A4B2-60    PAGE 60 OF 210

APPENDIX A FIGURE 4A-2 - ENVIRONMENTAL FEATURE AND ACCESS PLAN



See Page 60

See Page 62

**PROJECT SUBSTATIONS**

- Preliminary ROW
- Existing Transmission ROW
- Proposed Substation Fence
- Construction Workspace
- Laydown Yard

The information presented in this map document is advisory and is intended for reference purposes only. Applicant owned and operated facility locations are approximate. Data Sources: ATC, XCEL, WDNR, WDOT, PSCW, County LIOs, NRCS, Imagery WROC 2020.

**PROJECT RELATED DATA**

- 2A Primary and Alternate Route
- 3B Primary Route
- 8C Alternate Route
- C21 Companion Route
- R17 Retired Route
- Route Segment ID
- Route Segment Node

**WETLAND DELINEATION METHOD**

- Field Identified
- Desktop Determined

**WATERWAYS**

- Delineated Waterway
- Stream A → Waterway ID

- Off ROW Construction Access
- Construction Matting in Wetland
- Construction Matting Pad in Wetland\*
- \*Matting Area Not to Scale
- Mapped WDNR Waterway

- Temporary Clear Span Bridge
- Temporary Clear Span Bridge with in-stream support
- Existing Bridge / Culvert
- Preliminary Structure Locations\*

- Perennial Stream
- Intermittent Stream
- Open Water
- County Boundary

0 150 300 Feet

\* Preliminary Structures are APPROXIMATE and are subject to change. Final pole placement will not be determined until detailed engineering is complete for the ordered route.

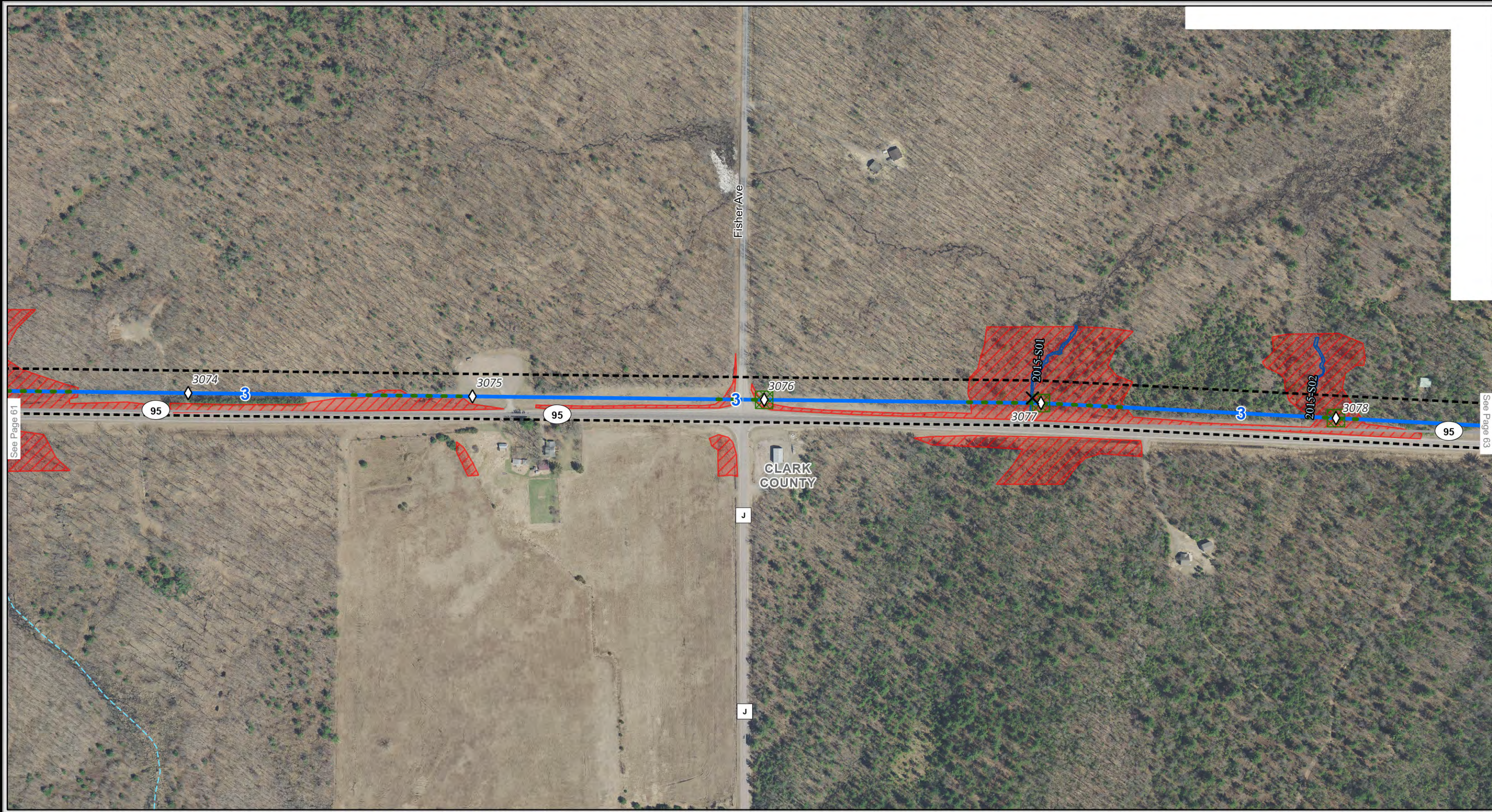
**APPENDIX A FIGURE 4A-2 ENVIRONMENTAL FEATURE AND ACCESS PLAN**

*Tremval - Arpin Primary*

**GRID FORWARD - CENTRAL WISCONSIN PROJECT**

FEBRUARY 2025	MAP A4B2-61	PAGE 61 OF 210
---------------	-------------	----------------

APPENDIX A FIGURE 4A-2 - ENVIRONMENTAL FEATURE AND ACCESS PLAN



See Page 61

See Page 63

**PROJECT RELATED DATA**

- 2A Primary and Alternate Route
- 3B Primary Route
- 8C Alternate Route
- C21 Companion Route
- R17 Retired Route

Route Segment ID  
Route Segment Node

**WETLAND DELINEATION METHOD**

- Field Identified
- Desktop Determined

**WATERWAYS**

- Delineated Waterway
- Stream A → Waterway ID

- Off ROW Construction Access
- Construction Matting in Wetland
- Construction Matting Pad in Wetland\*
- \*Matting Area Not to Scale
- Mapped WDNR Waterway

- Temporary Clear Span Bridge
- Temporary Clear Span Bridge with in-stream support
- Existing Bridge / Culvert
- Preliminary Structure Locations\*

\* Preliminary Structures are APPROXIMATE and are subject to change. Final pole placement will not be determined until detailed engineering is complete for the ordered route.

- Perennial Stream
- Intermittent Stream
- Open Water
- County Boundary

**PROJECT SUBSTATIONS**

- Proposed Substation Fence
- Construction Workspace
- Laydown Yard

**ATC**

The information presented in this map document is advisory and is intended for reference purposes only. Applicant owned and operated facility locations are approximate. Data Sources: ATC, XCEL, WDNR, WDOT, PSCW, County LIOs, NRCS, Imagery WROC 2020.

**APPENDIX A FIGURE 4A-2 ENVIRONMENTAL FEATURE AND ACCESS PLAN Tremval - Arpin Primary**

**GRID FORWARD - CENTRAL WISCONSIN PROJECT**

FEBRUARY 2025    MAP A4B2-62    PAGE 62 OF 210

APPENDIX A FIGURE 4A-2 - ENVIRONMENTAL FEATURE AND ACCESS PLAN

0    150    300  
Feet